



Student well-being is an integral part in all aspects of school life and hinges on our understanding of how students learn best in a well-supported and positive environment. The Student Discipline & Student Well-Being Policy, relates to the way our students engage with their learning, as well as the way our student's behaviour is managed. Our behaviour systems are implemented within the theory of the Positive Behaviour for Learning (PBL) framework, which has been implemented at Peats Ridge Public School to ensure that these positive environments are evident across the school. Our PBL program aims to have clearly defined expectations, recognition and behaviour management processes to allow students to be best supported as individuals.

Contextual Statement

Student Welfare at Peats Ridge Public School:

- Encompasses everything the school community does to meet the personal, social and learning needs of students
- Creates a safe, caring school environment in which students are nurtured as they learn
- Is achieved through the total school curriculum and the way it is delivered
- Incorporates effective discipline
- Incorporates preventive health and social skills programs
- Stresses the value of collaborative early intervention when problems are identified
- Provides ongoing educational services to support students
- Recognises the diversity within the school community and provides programs and support which acknowledges differences and promotes harmony
- Recognises the role that the school plays as a resource to link families with community support services
- Provides opportunities for students to:
 - enjoy success and recognition
 - make a useful contribution to the life of the school
 - derive enjoyment from their learning

Peats Ridge Public School provides effective learning and teaching within a secure, well-managed environment, in partnership with parents and the wider school community. The objectives and outcomes that follow therefore relate to:

- Effective learning and teaching
- Positive climate and good discipline
- Community participation

Our Student Discipline & Well-Being Policy is supported by the Peats Ridge Public School Anti-bullying Plan and is underpinned by the Department of Education and Communities' policies. The name of these relevant policies and their web-links are detailed below:

Bullying: Preventing and Responding to Student Bullying in Schools Policy

https://www.det.nsw.edu.au/policies/student_serv/discipline/bullying/PD20100415.shtml?level=

Student Discipline in Government Schools Policy

https://www.det.nsw.edu.au/policies/student_serv/discipline/stu_discip_gov/PD20060316.shtml?level=Schools

Student Welfare Policy

https://www.det.nsw.edu.au/policies/student_serv/student_welfare/stude_welf/PD20020052.shtml

Rights and Responsibilities

Student Rights and Responsibilities

Student Rights	Student Responsibilities
<ul style="list-style-type: none"> • Receive quality education • Be treated with dignity • Be able to learn • Work in a safe, healthy environment both in and out of the classroom - free from bullying and intimidation • Be able to have and display their own opinions, values and beliefs 	<ul style="list-style-type: none"> • Be prepared to learn • Respect the opinions, values and beliefs of others • Allow other students to learn • Be honest and truthful • Report any unsafe/unacceptable behaviours • Use respectful language and polite manners

Teacher Rights and Responsibilities

Teacher Rights	Teacher Responsibilities
<ul style="list-style-type: none"> • Teach in a climate free from disruption and where teaching/learning is respected • Be respected as a professional and as an individual • Expect behaviour that contributes to a positive class atmosphere • Have time to work with students as individuals • Receive support from the school community • Be treated with respect and dignity 	<ul style="list-style-type: none"> • They are familiar with all school policies and documents related to student well-being • Contribute to the provision of a caring, well-managed, safe environment for all students, staff and parents • Involve parents and the community in programs within the school • Act in accordance with the school's PBL framework and encourage free and frequent, positive rewards for students.

Principal Responsibilities	Learning Support Team Responsibilities
<ul style="list-style-type: none"> • Ensure that a commitment to student welfare underpins all the policies and activities of the school • Ensure that the school community reviews policies and practices related to student welfare • Ensure that student welfare is regularly reviewed using appropriate planning processes • Ensure that the school's Well-Being Policy is regularly reviewed 	<ul style="list-style-type: none"> • Develop effective mechanisms for integrating behaviour management, conflict resolution and support for students experiencing difficulties. • Support staff in dealing with student progress and welfare • Assist in the utilisation of support services for learning and behaviour development

Community Rights and Responsibilities

Parent Rights	Parent Responsibilities
<ul style="list-style-type: none"> • Be involved in their child's education • Talk to teachers and staff members about their child through the appropriate channels e.g. book a time for a meeting • Be informed of issues related to the learning, social or behavioural development of their child • Be informed of upcoming events in the school that they can be involved in 	<ul style="list-style-type: none"> • Follow the <i>Parents and Visitors Code of Conduct</i> • Participate in the learning of their children and the life of the school, including reviews of student welfare practices and the PBL expectations • Share responsibility for shaping their children's understanding about acceptable/behaviour • Work with teachers to establish fair and reasonable expectations of the school

Peats Ridge Public School Core Values and Expectations

Peats Ridge Public School has developed a series of core values and expectations which apply to all settings across the school. These expectations play an important role in the structure and functionality of this Student-Well Being Policy. They underpin the interactions between our students, their teachers and the wider school community in an aim to guide our students in the development of positive and acceptable behaviours and attitudes.

Strategies to Promote Student Welfare

Effective Learning and Teaching

- Encouraging students to take responsibility for their own behaviour.
- Identifying and catering for the individual learning needs of students.
- Establishing well-managed teaching and learning environments.
- Providing students and parents with frequent opportunities for feedback.

Positive Climate and Good Discipline

- Providing students with opportunities to demonstrate success in a wide range of activities.
- Establishing clear school rules which are known and understood by all school community members.
- Developing and implementing policies and procedures to protect the rights, safety and health of all school community members.
- Monitoring attendance and supporting all children attend school regularly.
- Providing opportunities for all students to be involved in positive relationships and develop skills related to social responsibility, problem solving and dispute resolution.
- Providing many opportunities for student leadership.

Community Participation

- Acknowledging parents as partners in school education.
- Encouraging parent and community members to participate actively in the education of young people and in the life of the school.
- Assisting families to gain access to support services within the community.
- Recognising students' families, cultures, languages and life experiences.

Positive Behaviour for Learning School Purpose

As a member of Peats Ridge Public School, students will be responsible in the way they behave, respectful in the way they act towards others and display excellence by having the right attitude towards learning. Wherever they are at school, our students will strive to demonstrate Peats Pride.

Positive Behaviour for Learning School-wide Expectations: Peats Pride

The following expected behaviours have been taught explicitly to the students and are displayed appropriately around the school. These expectations form the core of our school discipline code.

Setting	Excellence	Respect	Responsibility
All Settings	<ul style="list-style-type: none"> Be Well Mannered And Speak Politely Take Care Of Our School and The Things In It Listen To and Follow Adult Instructions Take Pride In Your Appearance 	<ul style="list-style-type: none"> Be an Excellent Student Participate In All Activities Do Your Best Be Prepared 	<ul style="list-style-type: none"> Keep Hands and Feet To Yourself Move Safely and Sensibly Wear The School Uniform Be In The Right Place, At The Right Time
Assembly and Hall	<ul style="list-style-type: none"> Stand Respectfully During the National Anthem Listen To And Follow Adult Instructions Take Pride In All Achievements 	<ul style="list-style-type: none"> Follow The Five Ls <ul style="list-style-type: none"> Legs, Lips, Lap, Look and Listen Participate and Do Your Best Give Your Full Attention 	<ul style="list-style-type: none"> Sit Sensibly In Your Own Place Keep Hands and Feet To Yourself Listen to school leaders and speakers
Front Office	<ul style="list-style-type: none"> Be Well Mannered And Speak Politely Wait Quietly Be Considerate Of Others 	<ul style="list-style-type: none"> Have A Reason To Be In The Office Have Notes and Money Ready 	<ul style="list-style-type: none"> Walk When In The Office or on the ramp Be In The Right Place at Right Time Enter and Exit Carefully
Basketball Court	<ul style="list-style-type: none"> Consider Other's Games and Activities Put Rubbish In The Bin Take Turns and Play Fairly 	<ul style="list-style-type: none"> Encourage Others To Join In Set and Follow Rules For Games Follow The Bell Times 	<ul style="list-style-type: none"> Use Correct Equipment at The Right Time Wear Your School hat
Bubblers	<ul style="list-style-type: none"> Be Considerate Of Others Use Appropriate Language Turn Bubblers Off 	<ul style="list-style-type: none"> Wait Your Turn Use At The Right Time Be Sensible 	<ul style="list-style-type: none"> Use For The Right Purpose Use Appropriately Keep Hands and Feet To Yourself
Weather shed	<ul style="list-style-type: none"> Listen To And Follow The Teacher's Instructions Use Manners and Kinds Words Consider Others On The Bus 	<ul style="list-style-type: none"> Be Prompt To the Weather Shed Have Your Bus Pass Ready Wait for your parents in the Weather shed 	<ul style="list-style-type: none"> Sit On The Seats Sensibly Wait For The Teacher's Instructions When The Bus Arrives Stop At The Post
Canteen	<ul style="list-style-type: none"> Be Well Mannered and Speak Politely Wait your turn Follow Instructions 	<ul style="list-style-type: none"> Have your Money Ready 	<ul style="list-style-type: none"> Be Here At The Right Time Wait Behind The Student in Front Keep Hands and Feet To Yourself
Computer Use	<ul style="list-style-type: none"> Take Turns When Appropriate Keep Noise To A Minimum Keep Workstation Tidy 	<ul style="list-style-type: none"> Log On and Log Off Own Account Use Sensibly Stay On Task 	<ul style="list-style-type: none"> Only Access Approved Sites Ask a Teacher If You Need Assistance Stay In Your Seat
Library	<ul style="list-style-type: none"> Listen To And Follow Instructions Use A Quiet Voice 	<ul style="list-style-type: none"> Use Your Time Wisely Bring Your Library Bag Borrow and Return Books 	<ul style="list-style-type: none"> Be In The Right Place Line Up Appropriately Walk
Lining Up	<ul style="list-style-type: none"> Place Bag In The Right Spot Be Well Mannered And Speak Politely Be Considerate Of Others 	<ul style="list-style-type: none"> Stay In Your Own Class Line Look After Belongings Be Sensible 	<ul style="list-style-type: none"> Respond To Bell and Walk To Lines Hold Your Equipment Still Be On Time
Playgrounds	<ul style="list-style-type: none"> Be Well Mannered And Speak Politely Share and Play Fairly Place Rubbish In The Bin 	<ul style="list-style-type: none"> Find The Teacher If Required Follow The Bell Times Use Equipment Appropriately 	<ul style="list-style-type: none"> Ball Games On The Oval Quiet Games In Other Areas Stay In Bounds Wear Your School Hat

Setting	Excellence	Respect	Responsibility
Toilets	<ul style="list-style-type: none"> • Keep The Toilets Clean • Consider Other's Privacy • Be Water Wise 	<ul style="list-style-type: none"> • Use Your Breaks To Use The Toilets • Leave immediately After Use • Report Problems 	<ul style="list-style-type: none"> • Use For The Right Purpose • Use Resources Appropriately • Finish Food Before Entering Toilets
Classroom Suggestions	<ul style="list-style-type: none"> • Look After All Equipment • Use Nice Words • Say Nice Things To Each Other • Raise Your Hands and Wait To Speak • Respect Other's Opinions • Be Considerate Of Others • Listen To and Follow Adult Instructions • Use Polite Language 	<ul style="list-style-type: none"> • Follow the Five Ls • Have your equipment Ready • Never Give Up • Participate In All Activities • Join In • Do Your Best • Be Ready To Learn • Encourage Others • Be An Active Participant • Stay On task • Have a Tidy and Organised Tray 	<ul style="list-style-type: none"> • Stay In Your Seat / Be In The Right Place • Use Equipment Correctly • Carry Equipment Carefully • Keep Your Hands and Feet To Yourself • Wear Your School Uniform • Put things Away correctly • Have a Tidy Desk Space

Positive Behaviour for Learning Team

Our Positive Behaviour for Learning practices address not only the behavioural needs, but also the learning needs of all students and aims to achieve universal systems, procedures and expectations across the school. Like the Learning and Support Team, the PBL Team comprises of all staff members, as our PBL meeting takes place in our regular staff communication meeting. The PBL team promotes a sense of shared responsibility for learning where teachers, students and parents work together to ensure the best possible outcomes for our children.

The PBL team encourages all students to demonstrate characteristics of a "Peats Pride" person. We believe the recognition of student achievement plays a vital role in the development of an effective learning environment, and subsequently, we promote students to be rewarded free and frequently with our Dojo award system.

Whilst the PBL team's primary goal is to promote a positive setting for learning behaviour, we are also understanding of the need to have procedures in place to ensure that unacceptable behaviour is handled effectively and fairly.

Student Welfare Processes

One of the key teams related to student well-being is our Learning Support Team (LST), who addresses the learning and behaviour needs of students. As we are a small school, the team is made up of all teaching staff, plus our school counsellor and SLSO. Their role is to work with staff members, as well as parents and carers, to advise and make recommendations regarding student learning and behaviour.

Classroom teachers are encouraged to make referrals to the LST, and the LST team will then recommend strategies to support the child. Reviews are conducted on a regular basis.

Student Support Network

There are a number of support networks and personnel available for the benefit of the school and community.

Within the School

- Principal
- Learning and Support Teachers
- Aboriginal Education
- Classroom Teachers
- School Counsellor
- School Learning Support Officer
- Office Staff
- Student Leaders
- Parents
- Anti-Racism Officer
- Complaints Handling Officer

Outside of the School

- Family and Community Services
- Stewart House
- Community Nurse
- Non-Government Agencies

District Support

- Student Welfare Consultants
- Home School Liaison Officer
- District Guidance Officer
- Learning and Support Team AP
- Community Liaison Officer
- Aboriginal Community Liaison Officer

Positive Recognition

At Peats Ridge Public School, we treat each child as an individual, recognising that each student has different individual learning needs. Our systems and universal practices for positive recognition are flexible, with staff using a range of awards and rewards to acknowledge desirable behaviour.

Positive recognition includes:

- Our school wide award system (**detailed on the following page**)
- Class awards
- Dojo Points
- Class Dojo awards
- Peats Pride awards
- Principal's awards
- Bronze awards
- Silver awards
- Gold awards
- Diamond awards
- Class awards at the end-of-year presentation assembly
- Token draws at weekly assemblies
- Token draws at Peats Pride Award Assemblies
- House points
- Attendance awards

Privilege Days

In addition to the above recognition, a tiered system of privilege day activities is held several times during the year to recognise students who follow the following Peats Pride Rules across all settings:


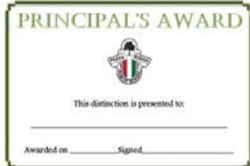


- Be Responsible: Keep your hands and feet to yourself; Move safely and sensibly
- Be Respectful: Be well-mannered and speak politely; Listen to and follow adults' instructions
- Display Excellence: Participate in all activities ; Allow the teacher to teach and others to learn



PEATS RIDGE AWARD SYSTEM



Respect Responsibility Excellence

What does my Child need?	How do they submit their awards?	When will they get their award?	What else do I need to know?	What award will my child receive?
20 Dojo Points	Dojo points are recorded on Class Dojo (interactive website). When your child achieves the level of 20 Dojo points, an award will be written up for your child and Dojo reset.	At the weekly assembly	Your child can collect multiple Dojo Awards per week. In addition to a Dojo Award, your child will receive a token to be placed in the Lucky Box in the office for a chance to win a prize at the weekly assembly.	Dojo Award 
Top 3 Students - Value of the Week	N/A	At the weekly assembly	There will be three (3) awards issued each week based on the PBL focus for the current week. Class teachers will nominate 2-3 students in the school to be awarded the PBL award for the week.	Fast Tracked Dojo Award 
5 Dojo Awards	Kept at home and returned to the "Gold Box" in P1 when 5 are collected.	At the weekly assembly	In addition to a Peats Pride Award, your child will receive a token to be placed in the Barrel in the office for a chance win a prize at the weekly assembly.	Peats Pride 
2 Peats Pride Awards	Kept at home and returned to the "Gold Box" in the office when 2 are collected	End of Term Peats Pride assembly	End of Term Peats Pride assembly. Parents will be invited in writing to attend the assembly and to join their child for a morning or afternoon tea with the staff.	Principal's Award 
2 Principal's Awards	Kept at home and returned to the "Gold Box" in the office when 2 are collected	End of Term Peats Pride assembly		Bronze Medallion 
4 Principal's Awards	Kept at home and returned to the "Gold Box" in the office when 4 are collected	End of Term Peats Pride assembly		Silver Medallion 
6 Principal's Awards	Kept at home and returned to the "Gold Box" in the office when 6 are collected	End of Term Peats Pride assembly		Gold Medallion 
When your child has received a Gold Medallion, they start again from the beginning of the award system.				
Two gold Medallions	Kept at home and returned to the "Gold Box" in the office when 2 are collected	Presentation Night	End of Year presentation night	Special School Recognition Award

This is continuous awards system and DOES NOT reset each year.

Behaviour Management

Students who are in breach of the expected behaviour for our school may have this breach recorded via our behaviour management system. This system includes minor incident tracking through informal tracking procedures and staff communication. It also includes major incident tracking through our referral slips.

All recorded inappropriate behaviours are tracked through our record keeping logs and referrals and grids collated and filed. These behaviours are categorised as either minor or major incidences.

Examples of minor incidents are outlined below:

- Not wearing a hat in active play
- Non-completion of classwork
- Calling out in class
- Picking up sticks in the playground
- General low-level rough play in the playground
- Eating in the wrong place
- Small student verbal disagreements
- Inappropriate language
- Leaving seat without permission
- Other low-level behaviours

Examples of major incidents are outlined below:

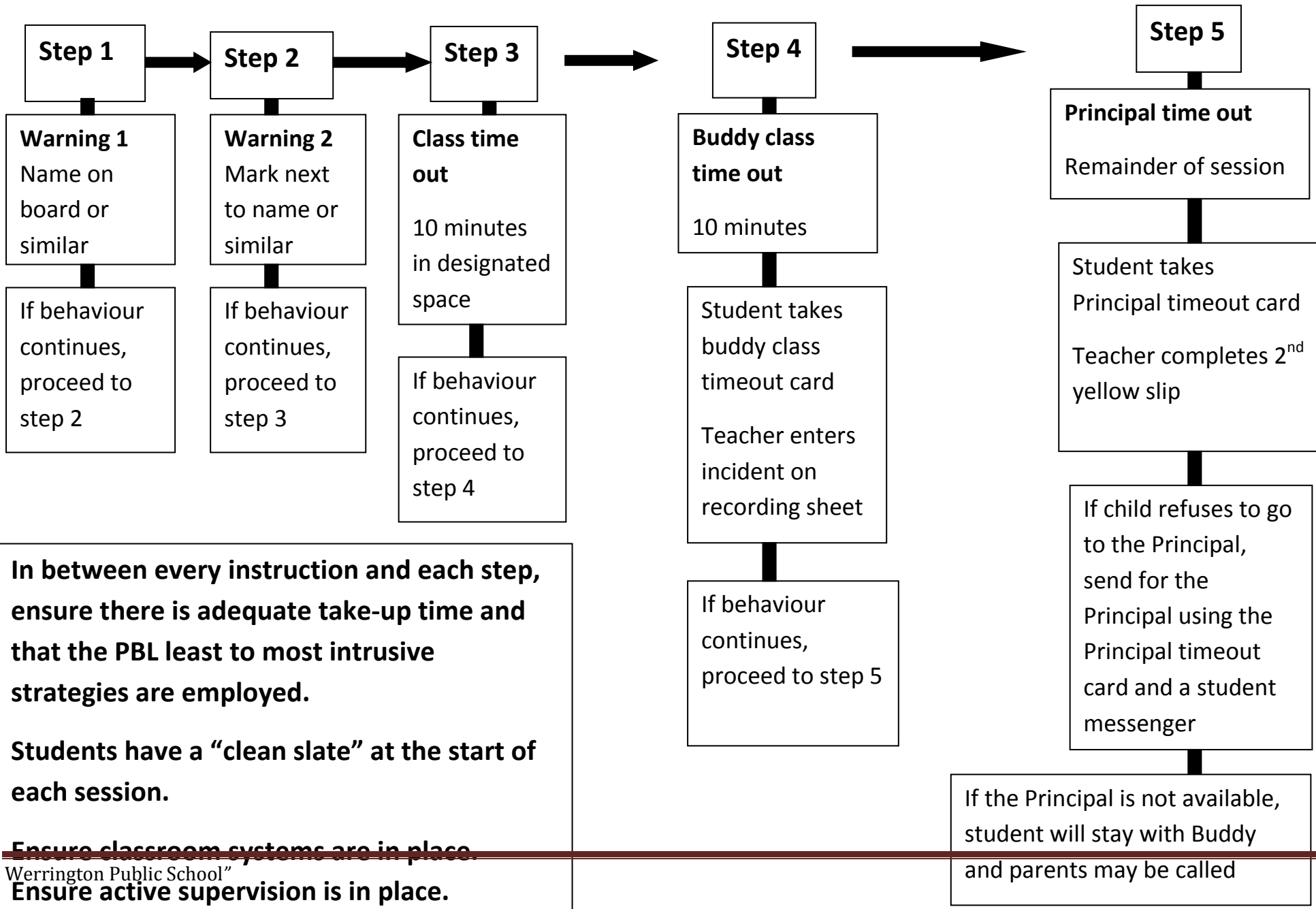
- Physical violence and aggression
- Aggressive and threatening behaviour
- Persistent disobedience
- Direct, inappropriate language
- Non-compliant behaviour
- Inappropriate language directed at a staff member or parent
- Leaving the classroom without permission
- Disrupting the learning of others
- Deliberately damaging school property
- Other higher-level behaviours

Consequences

If a student is in breach of our expected rules, a consequence will be issued, depending on the nature and severity of the incident and also depending on the circumstances and age of the individual student. Consequences may include:

- Verbal warnings
- Loss of privileges
- Playground withdrawal/restrictions
- Detention
- Reparation (eg. repair or replace broken item; clean up the area that has been affected)
- Referral to Principal
- Formal caution or suspension (in keeping with the suspension and expulsion procedures)

Peats Pride Classroom Discipline Flowchart



In between every instruction and each step, ensure there is adequate take-up time and that the PBL least to most intrusive strategies are employed.

Students have a “clean slate” at the start of each session.

~~Ensure classroom systems are in place.~~

Werrington Public School”

Ensure active supervision is in place.